

**JØRGEN**

**JøRGEN<sup>+</sup>**

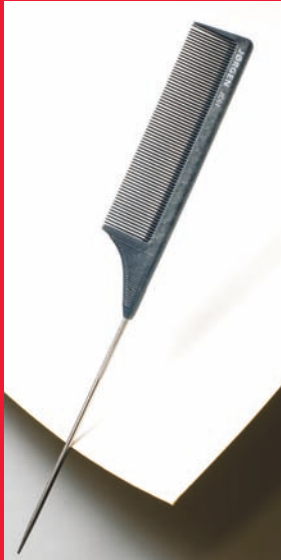


D e s i g n e d   b y   P r o f e s s i o n a l



**Signature & Essentials Collection Brochure**

## JØRGEN Professional Comb



### Metal Tail Comb

- Fine Tooth Pattern
- Ideal for Sectioning & Weaving

**JC01/6138-SIF**  
235(L) x 28(W)mm



### Tail Comb

- Fine Tooth Pattern
- Ideal for Sectioning & Weaving

**JC02/6147-SIF**  
230(L) x 27(W)mm



### All Purpose Cutting Comb

- Fine/Medium Teeth Pattern
- Ideal for Short & Fine Hair

**JC03/6087-SIF**  
170(L) x 27(W)mm



### Universal Cutting Comb

- Fine/Wide Teeth Pattern
- Ideal for All Hair Types
- Provides Direction & Control

**JC04/6088-SIF**  
217(L) x 30(W)mm

## JØRGEN Carbon Comb



### Stainless Steel Pin Tail Comb

- Fine Tooth Pattern Provides Proper Tension
- Gritted Sections on Comb & Pin Improves Grip When Working with Liquids
- Ideal for Sectioning, Weaving, Foil Wrapping & Lifting

**JCC01/6138-CBN**  
235(L) x 28(W)mm



### Fine Tooth Pin Tail Comb

- Consistent Tooth Pattern Provides Controlled Tension
- Perfect for Moving & Controlling
- Ideal for Sectioning & Weaving

**JCC02/6115-CBN**  
238(L) x 28(W)mm



### All Purpose Cutting Comb

- Sectioning Tooth Allows Part Definition
- Two Distinct Tooth Patterns (Fine/Course)
- Unlimited Cutting Options

**JCC03/6047-CBN**  
213(L) x 30(W)mm



### Dressing Comb

- Two Different Tooth Patterns (Fine/Course)
- Slightly Longer Teeth for Controlling & Moving Heavy & Thick Hair
- Create Strong Direction & Even Large Sections

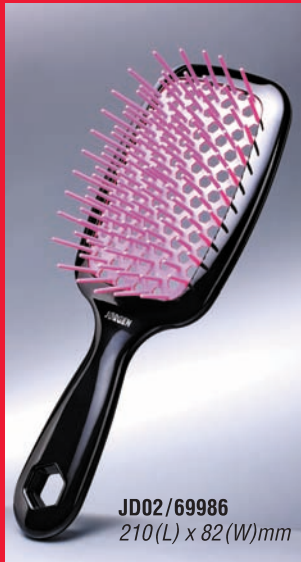
**JCC04/6039-CBN**  
218(L) x 40(W)mm

# JØRGEN

Essentials Collection



**JD01/6993BW**  
248(L) x 81(W)mm



**JD02/69986**  
210(L) x 82(W)mm



**JP01/69260BR**  
209(L) x 64(W)mm



**JP02/69264BR**  
245(L) x 84(W)mm

### Detangling Paddle Brush

- Flexible Short Bristles: Detangle & Smooth Hair Cuticles without Snag
- Soft Long Bristles with Ball Tip: Massage & Stimulate Hair Follicles
- Ideal for Wet & Dry Hair
- Safe for Fine Hair

### Detangling Brush

- Gently Detangles Hair
- Suitable for All Hair Types
- Can be Used to Distribute Hair Products
- Easy to Clean

### Paddle Brush

- Ideal for Creating Smooth, Sleek Styles
- Ergonomically Designed for Comfort
- Suitable for Grooming Medium to Long Hair

## JØRGEN Comb Set

JCOK



## JØRGEN

JBRK





**JV01/69261B**  
210(L) x 35(W)mm



**J107/69557**  
215(L) x 35(W)mm

**J109/69559**  
215(L) x 35(W)mm



**JT01/69483SSN (IRS)**  
ø49 mm

**JT02/69484SSN (IRS)**  
ø39 mm

**JT03/69485SSN (IRS)**  
ø32 mm

**PAT. IN USA, UK, EU COMMUNITY**

**Vent Brush**

- Ideal for Creating Volume & Movement
- Soft & Flexible Ball-Tipped Pins
- Single-Piece Molding Designed to Avoid Trapping of Dirt & Debris

**Styling Brush**

- Ergonomically Designed Handle
- Smooth Edged Nylon Pins
- High Performance Silicone Brush Pad

**Angled Porcupine Round Brush**

- Duo Layer Porcupine Design with Nylon Pins & Soft Horse Hair Bristles
- Bottom Layer of Angled Horse Hair Smooths Cuticles to Enhance Shine
- High Heat Resistant Nylon Bristles Penetrate into All Types of Hair Textures & Lengths

**Brush Set**



### Dressing Comb

- Two Different Tooth Patterns (Fine/Course)
- Slightly Longer Teeth for Controlling & Moving Heavy & Thick Hair
- Create Strong Direction & Even Large Sections

**JL6025**

220(L) x 45(W)mm

### All Purpose Cutting Comb

- Fine/Medium Teeth Pattern
- Ideal for Short & Fine Hair

**JL6050**

185(L) x 30(W)mm

### Detangling Comb

- Ideal for Wet & Dry Hair
- Safe for Fine Hair

**JL6022**

155(L) x 60(W)mm



### Tail Comb

- Fine Tooth Pattern
- Ideal for Sectioning & Weaving

**JL6102**

199(L) x 23(W)mm

### Metal Tail Comb

- Fine Tooth Pattern
- Ideal for Sectioning & Weaving

**JL6138**

235(L) x 28(W)mm

### Vent Brush

- Soft & Flexible Bristles
- Single-Piece Molding for Easy Cleaning
- Perfect for Short Hair or Men's Grooming

**JL69262**

210(L) x 37(W)mm

**JØRGEN+**

Signature Collection





## **Cheung's Hair Beauty Co., Ltd.**

Block B2, 6/F., Tsing Yi Industrial Centre, Phase 1,  
Tsing Yi, N.T., Hong Kong.

Tel : (852) 2495 1188  
Fax : (852) 2433 0101, 2433 5500  
Email : [info@cheungshairco.com](mailto:info@cheungshairco.com)  
Web Site : [www.cheungshairco.com](http://www.cheungshairco.com)

**SCAN ME**



Cheung's Catalog